

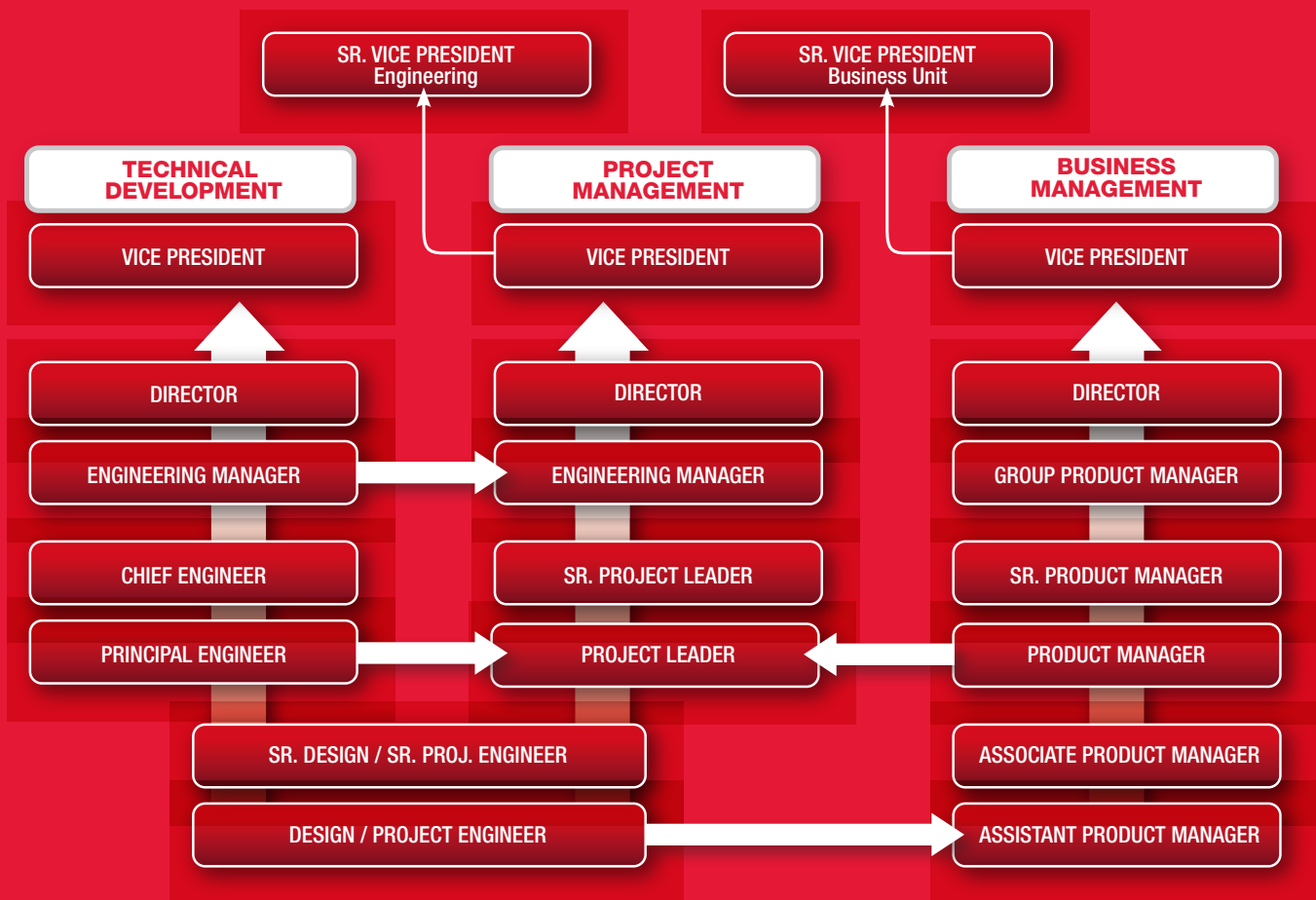


JOIN OUR TEAM.

At Milwaukee® we are defined by unprecedented speed, agility, innovation and quality. We strive for operational excellence in order to deliver best-in-class products that exceed the needs of our end users. We achieve this by cultivating a culture to hire, reward, mentor, teach and grow exceptional people.

Milwaukee Tool is a subsidiary of Techtronic Industries Co. Ltd. (TTI).

ENGINEERING CAREER PATHS



CURRENT JOB OPPORTUNITIES*

*See reverse side for instructions to apply.

■ Mechanical Engineer

■ Mechanical Engineer Internship

■ Electrical Engineer

■ Electrical Engineer Internship

DEPARTMENT DESCRIPTIONS

Early Product Development

- Work closely with marketing and end users to investigate new-to-the-world products and improvements to existing product features.

Advanced Engineering

- Stretch the state-of-the-art within our industry by inventing new-to-the-world technology.
- Bring concept designs to life through multiple iterations of rapid prototyping.

New Product Development

- Take a concept through the engineering process to deliver world class products to market.
- Develop leadership skills working within a global cross-functional team.

Hand Tool Engineering

- Develop leadership skills as you coordinate cross-functional project teams tasked with designing and developing new hand tools.

Accessory Engineering

- Focus on consumable accessories—saw blades, drill bits, hole saws, driver bits, etc.
- Lead projects to design and develop products with optimal performance.

Value Engineering / Product Support

- Implement the principles of Design for Manufacturability / Assembly and Six Sigma to reduce the cost of existing products.
- Act as a liaison between engineering, suppliers and manufacturing.

RECENT GRADUATES AT MILWAUKEE TOOL



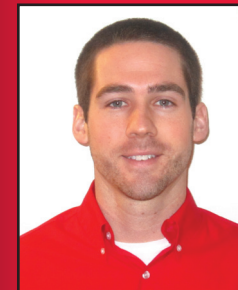
Hans Banzholzer

Major:
Mechanical Engineering

Class:
May 2013

Current Role:
Design Engineer
(Cordless NPD)

I chose Milwaukee Tool to accelerate my exposure to the entire engineering process. Milwaukee Tool consists of a team that is extremely supportive, full of talent and willing to aid in the development of new engineers. The fast paced projects challenge my skill set, keep me engaged and make me excited to go to work each day. An added bonus is Milwaukee Tool promotes an active lifestyle outside of the workplace by hosting a variety of rec sports and team building activities.



Tim Bartlett

Major:
Electrical & Computer Engineering

Class:
May 2012

Current Role:
Design Engineer
(Electrical Engineering)

I chose to join Milwaukee Tool because it offered me a chance to work on both hardware and software design in a great atmosphere. The company is filled with highly motivated employees whom are driven to win, and also easy to work with. The fast paced environment provides ample opportunities to work on a variety of projects in a short amount of time. It's a great reward seeing all of those products on store shelves, and I never get tired of listening to end users tell us how much they love our products.

HOW TO APPLY

- Go online to Engineering Career Services and search for Milwaukee Tool Career Opportunities OR go to milwaukeetool.jobs
- Contact Nicole Rozek in Human Resources if you have questions regarding employment opportunities. nicole.rozek@milwaukeetool.com

